

# RESPONDING TO AVIAN INFLUENZA

Do you know what would happen in an avian influenza (AI) response? As a stakeholder in the Australian poultry industries it's important to know who plays a role in an emergency animal disease (EAD) response, and what your involvement may look like.

## What happens when an AI outbreak is confirmed?

State/territory governments are responsible for managing outbreaks in their jurisdictions, with support from industry and other agencies. The chicken and egg industries also have trained liaison representatives who can provide industry specific insights and skills during a response.

The peak industry bodies, Australian Chicken Meat Federation (ACMF) and Australian Eggs will be providing operational advice to government responders and participating in high-level committees advising government. There are formal processes in place to identify and engage trained personnel to take on these roles.

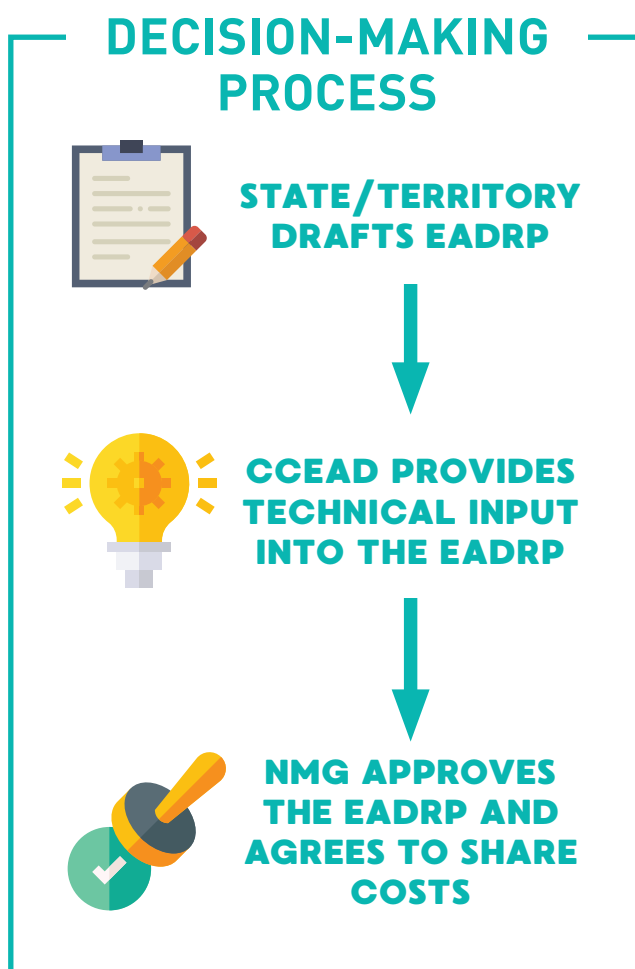
## Who makes the decisions?

There are arrangements in place to ensure a swift response to an AI outbreak.

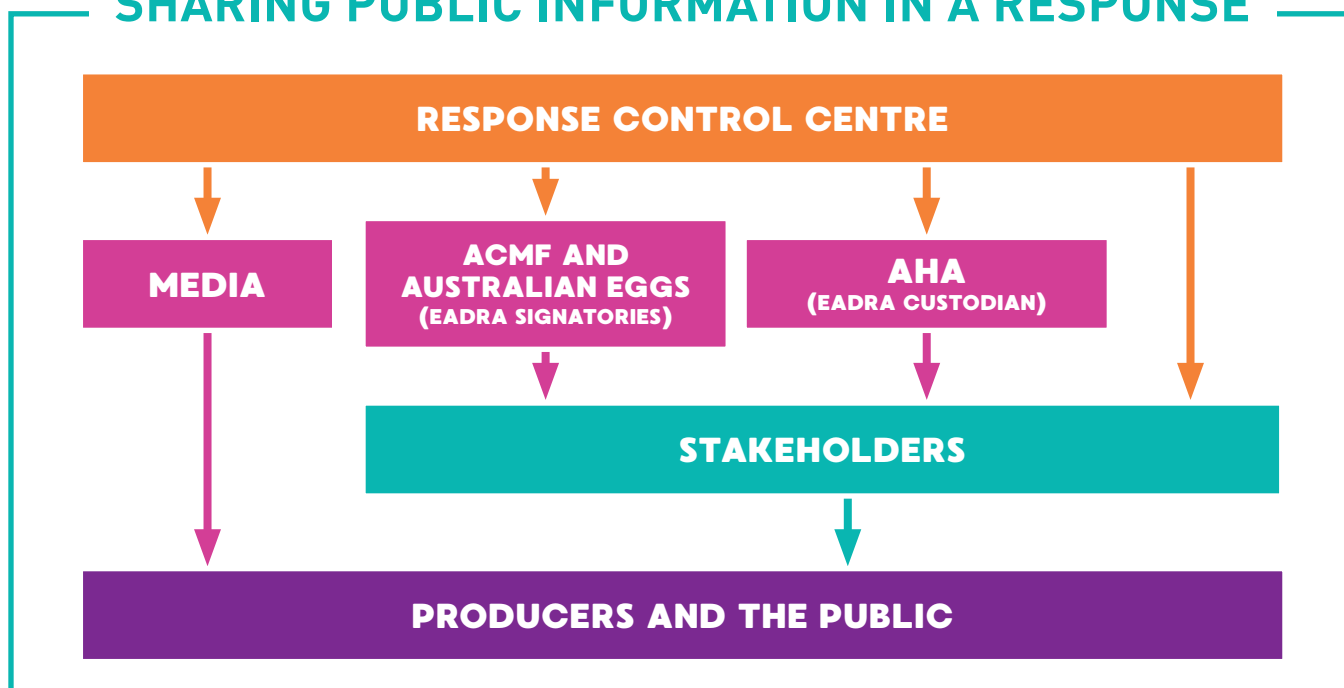
1. The relevant state/territory agency drafts an Emergency Animal Disease Response Plan (EADRP).
2. This will be sent to the Consultative Committee on Emergency Animal Disease (CCEAD), a group of technical experts who are responsible for providing input into the response management plan. In an AI response, the Australian government and state/territory governments provide input, as will ACMF and Australian Eggs.

3. CCEAD advises the National Management Group (NMG), a collective of high-level executives from the Australian Government, the state and territory governments and the affected livestock industries who approve the response management plan and commit the funding.

Participation on CCEAD and NMG is reserved for signatories to the Emergency Animal Disease Response Agreement (EADRA). This includes all Australian governments and many of the peak industry bodies, including ACMF and Australian Eggs.



## SHARING PUBLIC INFORMATION IN A RESPONSE



### What role do we play?

Public information in a response will be released by the response's control centre. This information is authorised for wider distribution and will filter out through official channels.

Stakeholders, such as state farming organisations and other industry groups, can assist the response by communicating public information to producers and providing relevant industry information as requested by the government responders.

If you have undergone training as a representative of your peak industry body, you may be called up to fill a number of roles within your organisation or as part of the control centre. It's important to make sure your contact details are current.

You also play a vital role in encouraging producers to implement proactive biosecurity measures to safeguard their properties and livelihood. For more information visit [www.farmbiosecurity.com.au](http://www.farmbiosecurity.com.au).

### Where do I get information?

Head to [www.outbreak.gov.au](http://www.outbreak.gov.au). Depending on the scale of the outbreak, local, state or national government bodies will also share information on their social media channels and websites. You may also receive information from ACMF, Australian Eggs or Animal Health Australia.

### More information

#### Animal Health Australia

[www.animalhealthaustralia.com.au/avianinfluenza](http://www.animalhealthaustralia.com.au/avianinfluenza)

#### Department of Agriculture, Water and the Environment

[www.agriculture.gov.au](http://www.agriculture.gov.au)

#### Australian Chicken Meat Federation

[www.chicken.org.au](http://www.chicken.org.au)

#### Australian Eggs

[www.australianeggs.org.au](http://www.australianeggs.org.au)

You can also visit your relevant State or Territory Department of Agriculture websites for further information.



## Want to know more about EADs?

Enrol today in the free EAD Foundation online course. It will help enhance your understanding about Australia's preparedness and response arrangements.

#### For more information visit

[www.animalhealthaustralia.com.au/emergency-animal-disease-training-program](http://www.animalhealthaustralia.com.au/emergency-animal-disease-training-program)